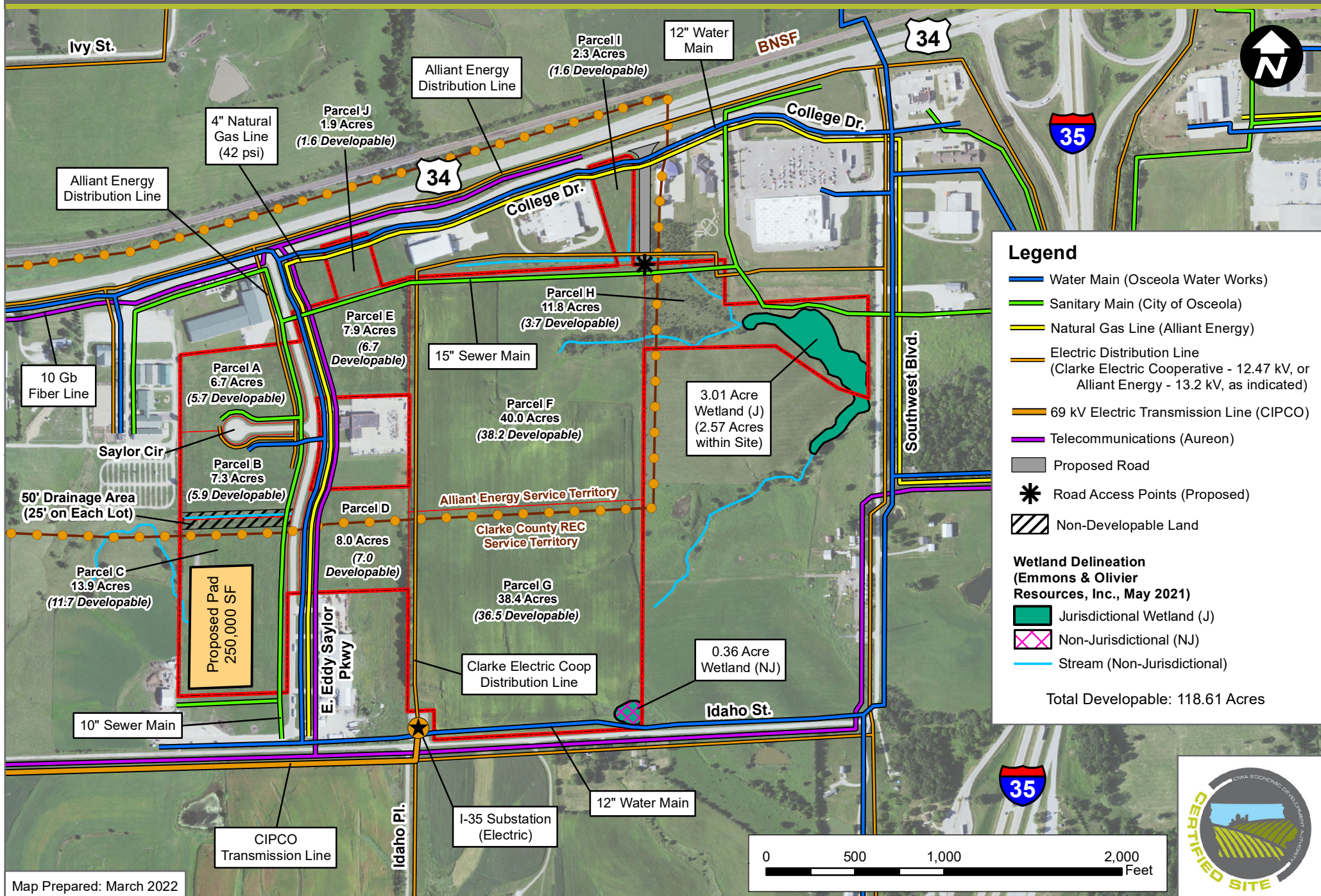


E. Eddy Saylor Industrial Park (138.07 ACRES)

OSCEOLA, IOWA - MASTER DEVELOPMENT PLAN



Legend

- Water Main (Osceola Water Works)
- Sanitary Main (City of Osceola)
- Natural Gas Line (Alliant Energy)
- Electric Distribution Line (Clarke Electric Cooperative - 12.47 kV, or Alliant Energy - 13.2 kV, as indicated)
- 69 kV Electric Transmission Line (CIPCO)
- Telecommunications (Aureon)
- Proposed Road
- ✱ Road Access Points (Proposed)
- Non-Developable Land

Wetland Delineation (Emmons & Olivier Resources, Inc., May 2021)

- Jurisdictional Wetland (J)
- Non-Jurisdictional (NJ)
- Stream (Non-Jurisdictional)

Total Developable: 118.61 Acres

Map Prepared: March 2022

